

1.	1
2.	2
3.	3
4.	4
5.	Visual Basic	5
6.	Visual C++	6
7.	7
8.	9
9.	(API)	10
	initcom	10
	destroycom	10
	opencom	11
	setcom	11
	clearbfr	12
	writecom	12
	readcom	13
	readdcom	13
	checkbfr	14
	setmdm	14
	checkmdm	15
	flowcom	15
	offisland	16
	ondata	16
	ondel	17
	onempty	17
	onmdm	18
	closecom	18

PC MS-DOS Windows . DOS
 Windows
 Windows
 Windows 가 . PC
 RS232 DOS
 Windows 가
 , ?
 Windows 가 가
 Windows (API)
 low
 MFC(Microsoft Foundation Class) Windows API Wrapper
 , MFC API low
 Windows
 API 가 "WinCom"
 DLL(Dynamic Linked Library) , 가 Windows
 WinCom , Windows (MSCOMM.OCX) 가
 128 가
 WinCom Windows DLL MFC, Visual Basic, C++ Builder
 가
 WinCom
 , 가
 WinCom API
 : go INTPDS -> 9 " /WinCom20 "
 : go PDSCOM -> 7 " /WinCom20 "
 : www.sysbas.com > > > WinCom20
 ()
 : 02)583-9748

WinCom ,

Windows
DLL

"WinCom"

DLL CALL
API

PC ,

MS-Windows 95/98/NT/2000

IBM PC

가 .

IBM COM1/COM2
MULTI-8, MULTI-32

,
, PC 4

MULTI-2, MULTI-4,
128 .

WCMONITOR.EXE : WinCom

WCTEST.EXE : WinCom

WinCom

- Visual Basic, C++, C++ Builder

- (XON/XOFF...)

- O/S API

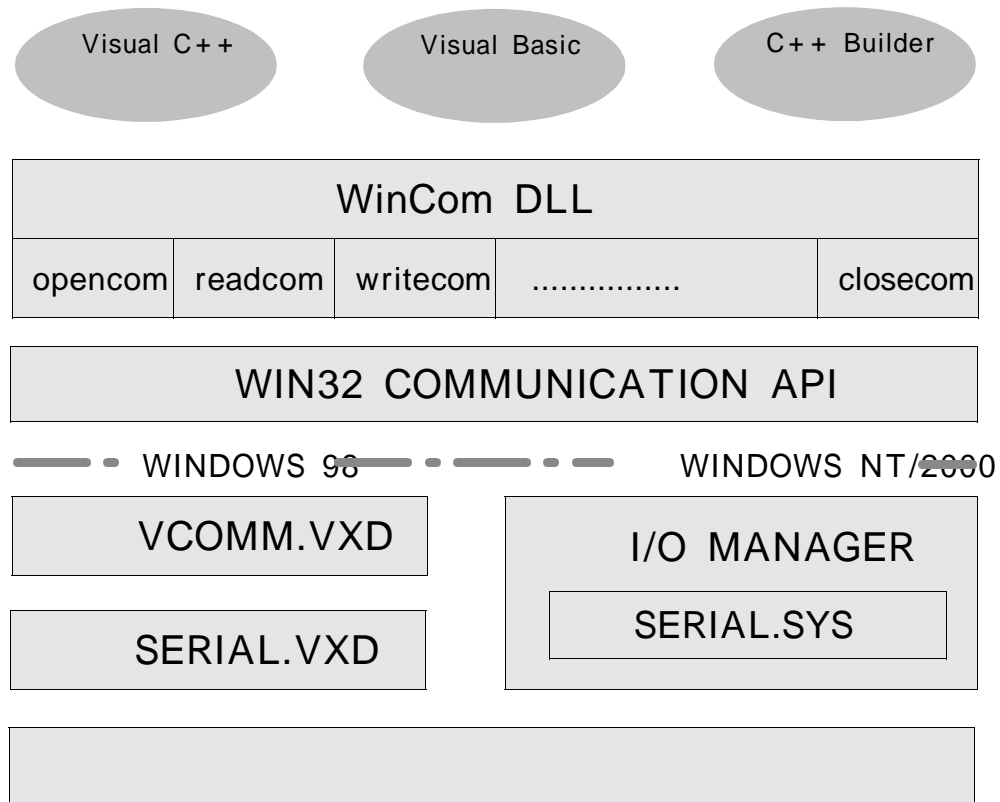
- 가 (, , ...)

- 가

- 가 (, , ,)

-

- /



WinCom

DLL(Dynamic Link Library) Windows 98/NT/2000

Visual Basic, Visual C++, C++ Builder

WinCom

가

WinCom DLL Windows 가

Wrapper

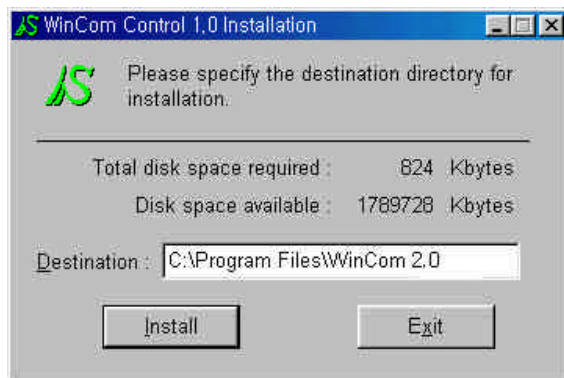
가

가

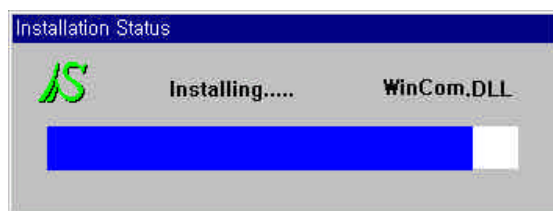
API

- INSTALL.EXE :
- UNINSTALL.EXE :
- WINCOM.DLL :
- WINCOM.LIB :
- WCMONITOR.EXE : WinCom
- WCTEST.EXE : WinCom
- \ SAMPLE \ VC : WinCom (Visual C++ 6.0)
- \ SAMPLE \ VB : WinCom (Visual Basic 6.0)

1.



2. 'INSTALL' 가



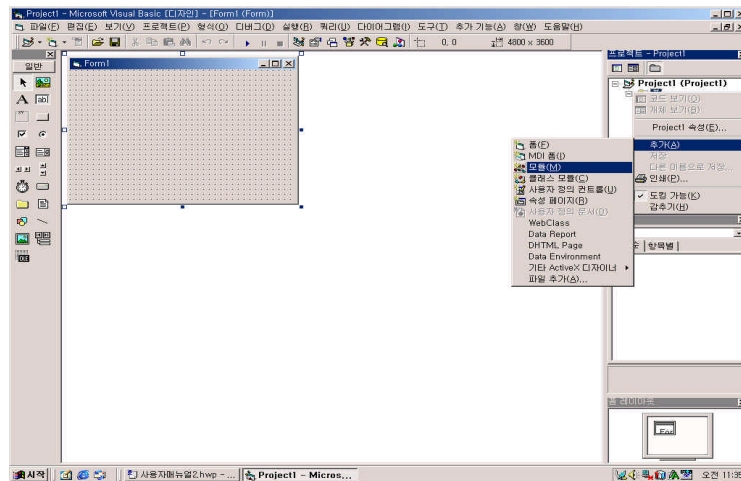
3. 가 가



4. 'OK' 가

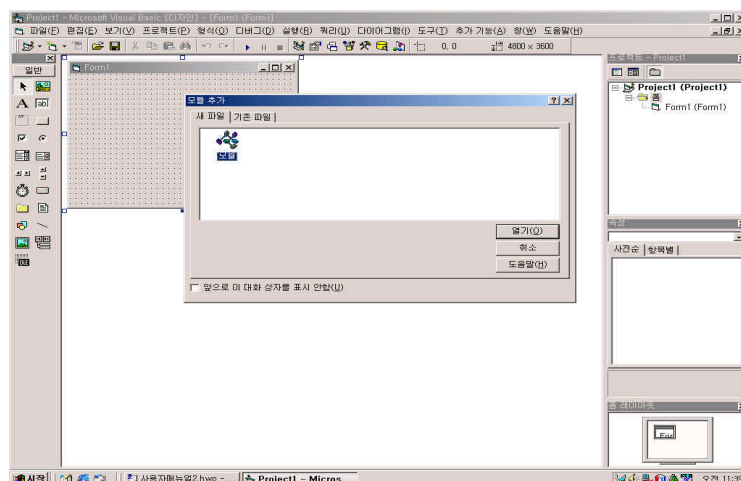
1. Visual Basic

-> -> 가->



2.

가 가 가

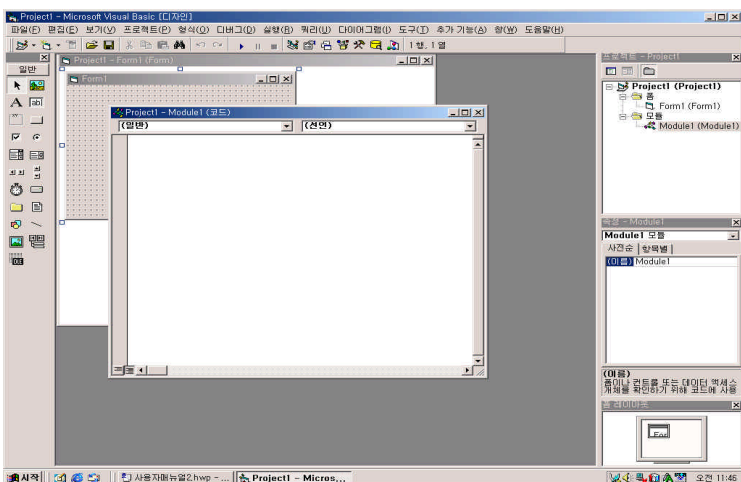


3.

가

가

WinCom
 (Declare Function Lib "WinCom" (,.....) as type .)



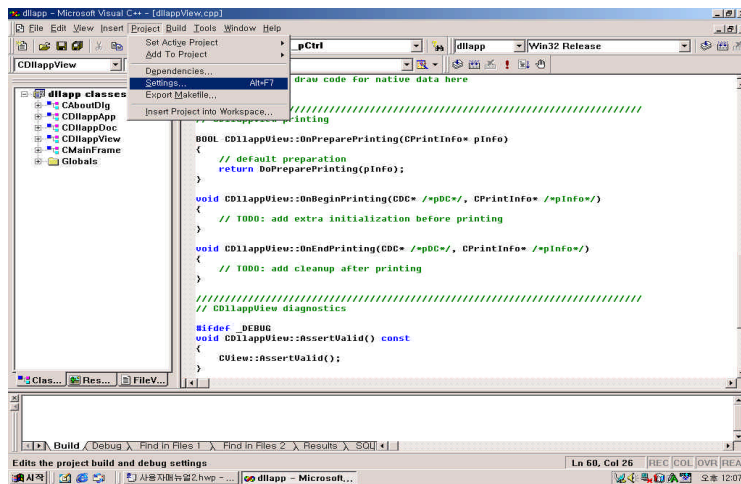
6. Visual C++

6

1. Visual C++

Project -> Settings...

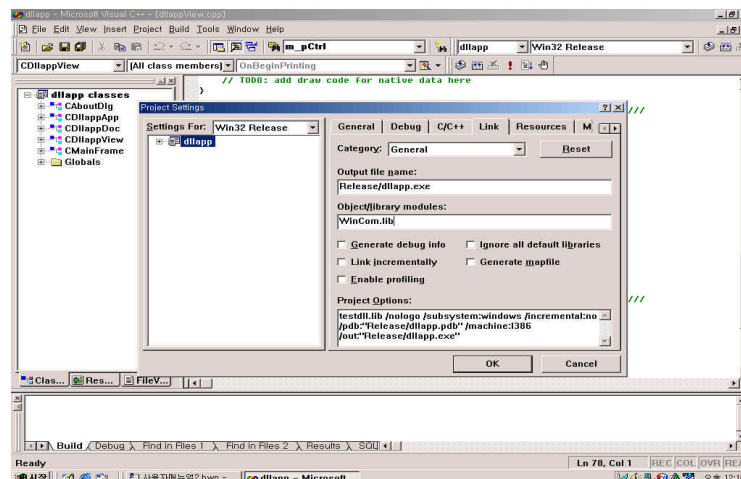
WinCom.lib



2.

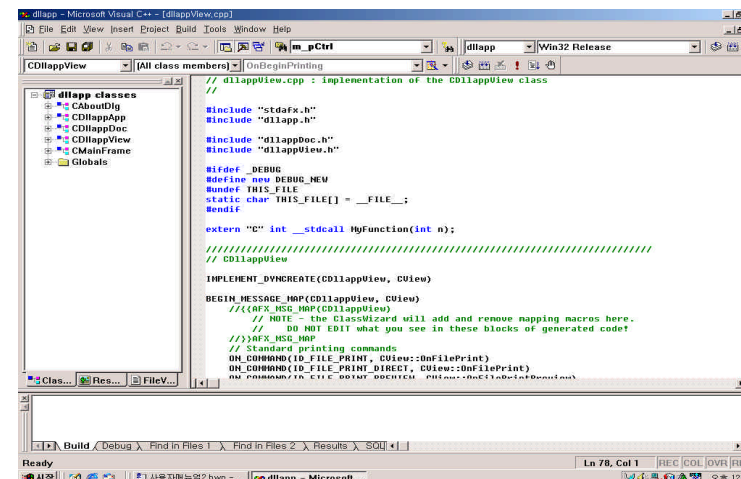
Project Settings
Object/library modules "WinCom.lib"

Link tab



3.

가 WinCom
(extern "C" type __stdcall (, ...))



1.

- WinCom

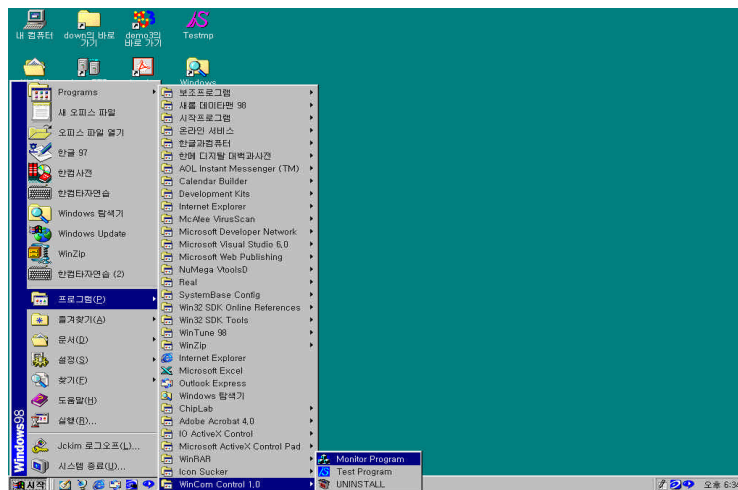
2.

- WinCom

- (Visual Basic, Visual C++, C++ Builder ...)

3.

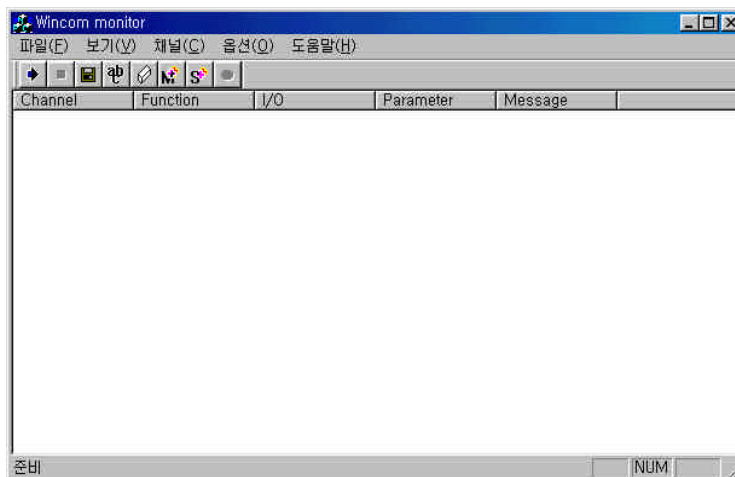
- ' ' -> -> WinCom Control 2.0 -> Monitor Program



4.

-

가



가 .

- Start Monitor : .
- Stop Monitor : .
- Start Capture : .
- End Capture : .
- Exit : .

가 .

- Tool Bar : Tool Bar on/off .
- Status Bar : Status Bar on/off .
- Channel Status Monitor :
(, ,).

가 .

- Enable All Channels : .
- Disable All Channels : .
- Select Channels : .

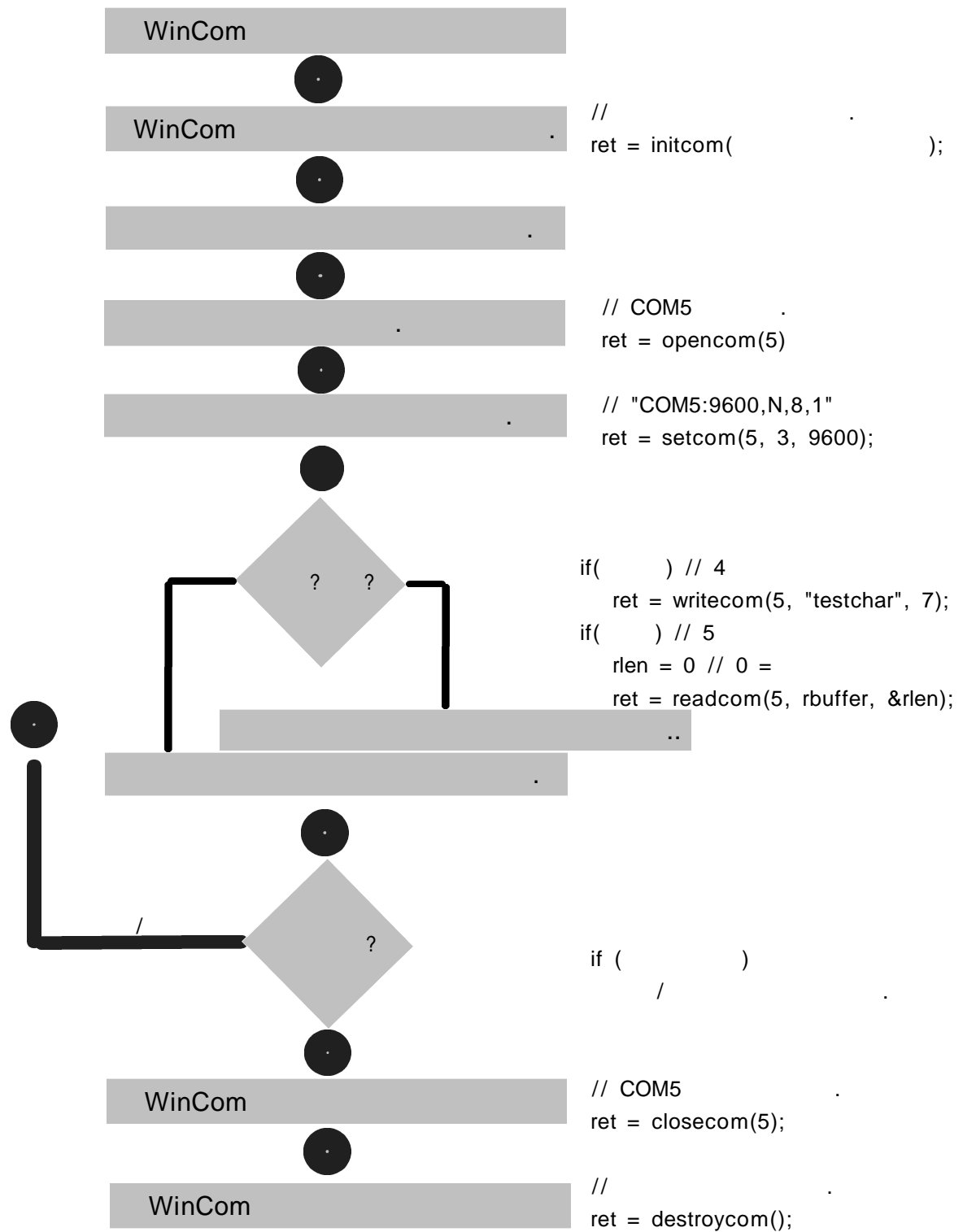
가 .

- Select Font : .
- Set Message Count : .
- Set Auto Save Count : .
- Clear All Message : .

가 .

- About Monitor ... : Monitor 가 .
()

- Channel 가 .
- Function .
- I/O 가 .
- Parameter 가 가 .
- Message 가 가 .



INITCOM

VC : long initcom (HANDLE hwnd)
VB : Long initcom (hwnd As long)

hwnd :

function : 1 - WinCom
 0 - WinCom

WinCom
hwnd WinCom

DESTROYCOM

VC : long destroycom()
VB : Long destroycom()

가 initcom

function : 1 - WinCom
 0 - WinCom

WinCom

OPENCOM

VC : long opencom (long port_number)

VB : Long opencom (port_number As Long)

port_number : (1 ~ 128)

function : BINARY X X X 0 0 0 0 0

ALREADY OPEN
CAN NOT OPEN
PARAMETER ERROR
DRIVER NOT INSTALLED

SETCOM

BYTE

VC : long setcom (long port_number, long byte_spec, long baud_rate)

VB : Long setcom (port_number As Long, byte_spec As Long, baud_rate As Long)

port_number : (1 ~ 128)

byte_spec : BYTE

baud_rate :

function : BINARY X X X 0 0 0 0 0

PORT DISABLED
PORT NOT FOUND
PARAMETER ERROR
DRIVER NOT INSTALLED

BYTE

NOT USED BIT 7, 6	PARITY BIT BIT 5, 4, 3	STOP BITS BIT 2	WORD LENGTH BIT 1, 0
00	000 = NONE 001 = ODD 011 = EVEN 101 = MARK 111 = SPACE	0 = 1 BIT 1 = 2 BITS	00 = 5 BITS 01 = 6 BITS 10 = 7 BITS 11 = 8 BITS

BYTE

PARAMETER ERROR 가

CLEARBFR

```

, CLEAR .

VC : long clearbfr (long port_number, long clear_code)
VB : Long clearbfr (port_number As Long, clear_code As Long)

port_number : (1 ~ 128)
clear_code : BINARY 0 0 0 0 0 0 X X
                                CLEAR
                                CLEAR

function : BINARY = X X X 0 0 0 0 0
                                PORT DISABLED
                                PORT NOT FOUND
                                PARAMETER ERROR
                                DRIVER NOT INSTALLED

CLEAR .

CLEAR .

"PARAMETER ERROR" clear_code 1, 2, 3

```

WRITECOM

```

VC : long writecom (long port_number, char *source, long length)
VB : Long writecom (port_number As Long, source As String, length As Long)

port_number : (1 ~ 128)
source      : 가
length      : (1 ~ 10000)
function    : BINARY X X X X X 0 0 0
                                TERMINAL BUSY
                                BUFFER FULL
                                PORT DISABLED
                                PORT NOT FOUND
                                PARAMETER ERROR
                                DRIVER NOT INSTALLED
                                가

                                가 . (BUFFER FULL)
" XOFF FLOW CONTROL", " FLOW CONTROL"
                                DCD OFF
                                "TERMINAL BUSY" 가

```

READCOM

VC : long readcom (long port_number, char * destination, long *length)
 VB : Long readcom (port_number As Long, destination() As Byte, length As Long)

port_number : (1 ~ 128)
 destination :
 length : (0 ~ 10000 , 0)

length :
 function : BINARY X X X X 0 X X X

BUFFER OVERFLOW
 OVER RUN
 PARITY/FRAMING ERROR
 INSUFFICIENT DATA
 PORT DISABLED
 PORT NOT FOUND
 PARAMETER EFRORR
 DRIVER NOT INSTALLED

가

"BUFFER OVERFLOW" - 가
 "OVER RUN" - UART 가
 "PARITY/FRAMING ERROR" 가
 "PARAMETER ERROR" length

READDCOM

VC : long readddcom (long port_number, char * destination,
 long *data_length, char *delimiter, long delimiter_length)
 VB : Long readddcom (port_number As Long, destiantion() As Byte,
 data_length As Long, delimiter As String, delimiter_length As Long)

port_number : (1 ~ 128)
 destination :
 delimiter :
 delimiter_length : (1 ~ 8, 가 0~ 8)

data_length :
 function : BINARY X X X X 0 X X X

BUFFER OVERFLOW
 OVER RUN
 PARITY/FRAMING ERROR
 DELIMITER NOT FOUND
 PORT DISABLED
 PORT NOT FOUND
 PARAMETER ERROR
 DRIVER NOT INSTALLED

가

8
 : delimiter_length = HEX 04 : 4 BYTE
 42 : 4 BYTE, 가 2 BYTE

"DELIMITER NOT FOUND"

CHECKBFR

VC : long checkbfr (long port_number, long check_code, long *size)
 VB : Long checkbfr (port_number As Long, check_code As Long, size As Long)

port_number : (1 ~ 128)

check_code : 1 = (BYTES)
 2 =
 3 =
 4 =
 5 =
 6 =

size : check_code

function : BINARY X X X 0 X 0 0 0

TERMINAL BUSY(FLOW CONTROL)
 PORT DISABLED
 PORT NOT FOUND
 PARAMETER ERROR
 DRIVER NOT INSTALLED

SETMDM

ON/OFF .

VC : long setmdm (long port_number, long set_code)
 VB : Long setmdm (port_number As Long, set_code As Long)

port_number : (1 ~ 128)

set_code : BINARY 0 0 0 0 0 0 X X

DTR
 RTS

function : BINARY X X X 0 0 0 0 0

PORT DISABLED
 PORT NOT FOUND
 PARAMETER ERROR
 DRIVER NOT INSTALLED

set_code IBM PC TECHNICAL REFERENCE .

CHECKMDM

VC : long checkmdm (long port_number, long *status_code)
 VB : Long checkmdm (port_number As Long, status_code As Long)

port_number : (1 ~ 128)

status_code : BINARY X X X X 0 0 0 0

CTS
 DSR
 RI
 DCD

function : BINARY X X X 0 X 0 0 0

TERMINAL BUSY
 PORT DISABLED
 PORT NOT FOUND
 DRIVER NOT INSTALLED

status_code IBM PC TECHNICAL REFERENCE

FLOWCOM

FLOW CONTROL

VC : long flowcom (long port_number, long flow_code)
 VB : Long flowcom (port_number As Long, flow_code As Long)

port_number : (1 ~ 128)

flow_code : HEX 0 X

0 = DISABLE FLOW CONTROL
 1 = XON/XOFF FLOW CONTROL ENABLE
 2 = XON/XOFF "
 3 = XON/XOFF "

function : BINARY X X X X 0 0 0 0

UNABLE TO USE RTS
 PORT DISABLED
 PORT NOT FOUND
 PARAMETER ERROR
 DRIVER NOT INSTALLED

FLOW CONTROL

OFFISLAND

USER

VC : long offisland (long port_number, long off_code)
 VB : Long offisland (port_number As Long, off_code As Long)

port_number : (1 ~ 128)
 off_code : BINARY 0 0 0 0 X X X X
 DATA USER
 DELIMITER USER
 EMPTY USER
 MODEM USER

function : BINARY X X X 0 0 0 0 0
 PORT DISABLED
 PORT NOT FOUND
 PARAMETER ERROR
 DRIVER NOT INSTALLED

OFF CODE BIT 1

USER

ONDATA

가

VC : long ondata (long port_number, long length)
 VB : Long ondata (port_number As Long, length As Long)

port_number : (1 ~ 128)
 length : (BYTES)

function : BINARY X X X 0 0 0 0 0
 PORT DISABLED
 PORT NOT FOUND
 PARAMETER ERROR
 DRIVER NOT INSTALLED

가

WM_USER + 100 가

ONDEL

VC : long ondel (long port_number, long length, char *delimiter)
 VB : Long ondel (port_number As Long, length As Long, delimiter As String)

port_number : (1 ~ 128)
 length : (1 ~ 8, 가 0 ~ 8)
 delimiter :

function : BINARY X X X 0 0 0 0 0
 PORT DISABLED
 PORT NOT FOUND
 PARAMETER ERROR
 DRIVER NOT INSTALLED

가 .

WM_USER + 200 가 .

가 8
 : length = HEX 04 : 4 BYTES
 42 : 4 BYTES, 가 2 BYTES

ONEMPTY

가 .

VC : long onempty (long port_number)
 VC : Long onempty (port_number As Long)

port_number : (1 ~ 128)

function : BINARY X X X 0 0 0 0 0
 PORT DISABLED
 PORT NOT FOUND
 PARAMETER ERROR
 DRIVER NOT INSTALLED

가 .

WM_USER + 300 가 .

ONMDM

가

```
VC : long onmdm (long port_number, long check_code)
VB : Long onmdm (port_number As Long, check_code As Long)
```

[illegible]

```
function      : BINARY  X X X 0 0 0 0 0
                                PORT DISABLED
                                PORT NOT FOUND
                                PARAMETER ERROR
                                DRIVER NOT INSTALLED
```

가

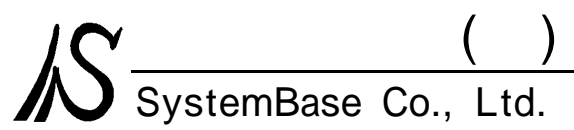
WM_USER + 400 가 .

CLOSECOM

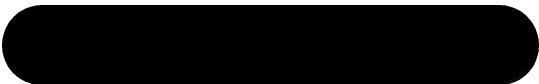
VC : long closecom (long port_number)
VB : Long closecom (port_number As Long)

port_number : (1 ~ 128)

```
function      : BINARY  X X X 0 0 0 0 0
                                PORT DISABLED
                                CAN NOT CLOSE
                                PARAMETER ERROR
                                DRIVER NOT INSTALLED
```



2 475-22 4
TEL : (02) 583-9748
FAX : (02) 583-9749
/ : sysbas
URL : www.sysbas.com



WinCom

Windows 95/98/NT

API

VERSION 2.0

